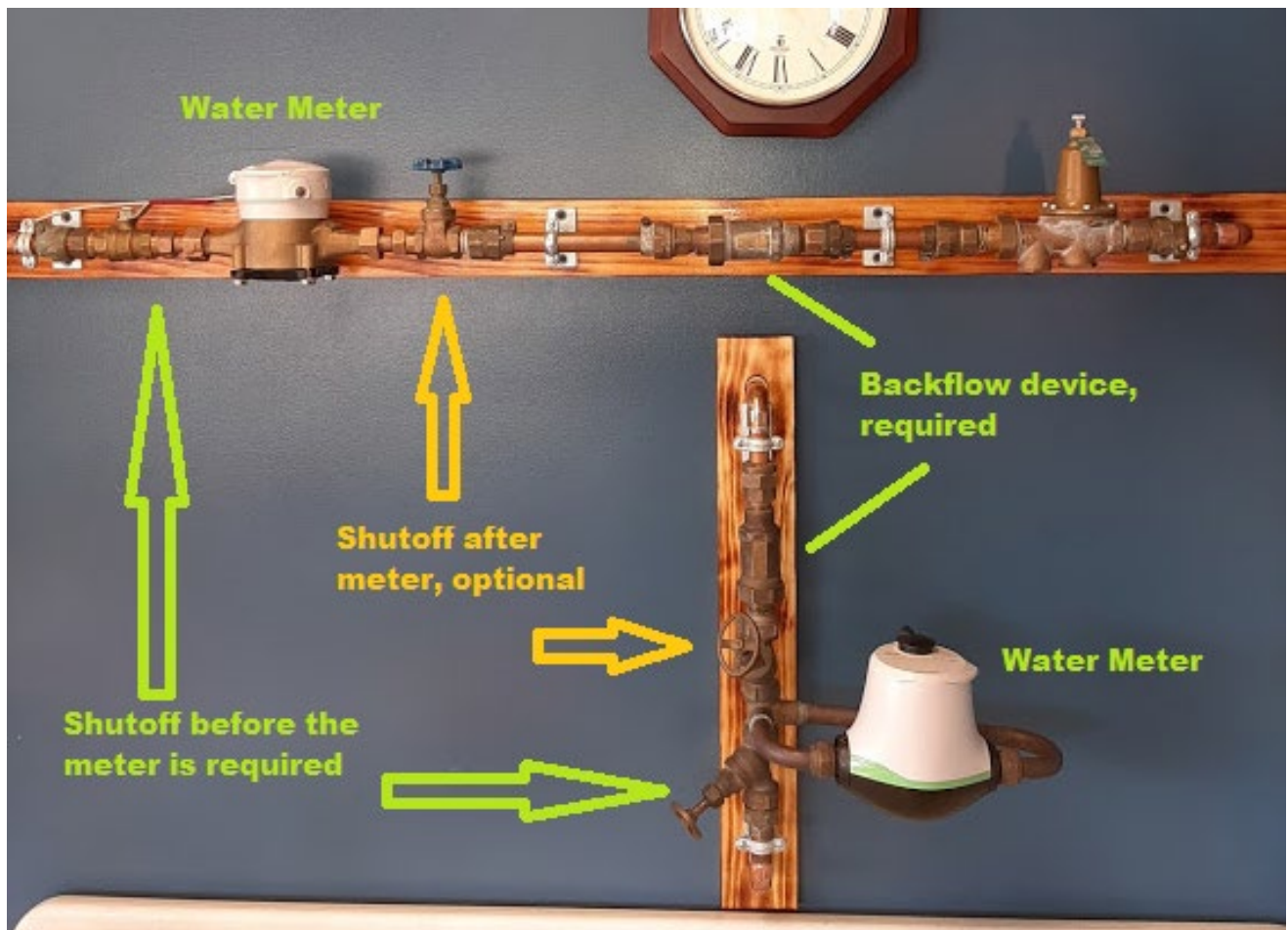


# Jackman Utility District

## Water meter Installation Spec Sheet



Shown above two, a Horizontal setup, and a Vertical setup utilizing a K-Horn

### An Optimal Setup, Details

An optimal setup is demonstrated in both models above. The horizontal setup spans approximately 4 feet and has a shutoff before (required) and after (optional) the water meter. Following the meter there needs to be a dual check backflow device (required) then there should be a pressure reducing valve (optional) after. We recommend the PRV due to high pressure in many parts of our system. The Vertical setup shown above utilizes a K-horn (purchasable from the Utility District) to make installation easy. The K-horn setup is about 2 feet tall. It includes a shutoff before the meter and a backflow device. The customer is still recommended to install a PRV with the K-Horn setup.

### Jackman Utility District Responsibilities

The Jackman Utility District is responsible for installation of a water service line from the water main to the property line where the curb stop shut-off valve is installed at the customers expense. The Utility District is also responsible for the installation of a water meter at the customers expense.

#### **Jackman Utility District Requires**

The Jackman Utility District requires a shut off valve prior to the meter, a residential dual check device (typically after the meter). The Utility District also requires safe, adequate access to the meter if it needs to be upgraded or repaired due to freezing.

#### **Jackman Utility District Recommends**

A pressure reducing valve is recommended due to high system pressure (up to 140psi in some parts of the system) and a shut off after the water meter. A K-horn is purchasable from the district for easy setup.

#### **Consumer's Responsibilities**

The consumer is responsible for the cost of excavation, parts & labour for the water main tap and service line to curb stop as well as a \$125 water meter fee (includes meter and installation). The consumer is also responsible to have a service line run from the curb stop to the house. The Consumer will protect the meter and dual check device from freezing at all times.