

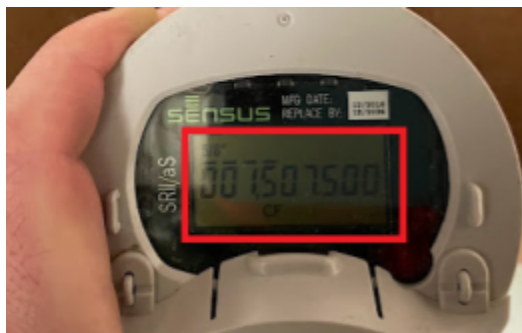
How to read your water meter

Have you ever wondered: “How close to the minimum am I?” “No water is running, why does it sound like I have flow in my sewer?” or “My bill was higher than normal, do I have a toilet running through?” Well fear not, reading a water meter is a relatively simple task, assuming you have access to your meter.

Sometimes meters are in crawl spaces under houses, or behind that giant spider in the basement you just don’t dare go near. Don’t fret! The water district can come and read your meter from the outside of your home through a small, black, oval-shaped reader that has (probably) already been installed. Of course, if you want to check it yourself, continue on.

First step is to find your water meter. If your house has a full basement, it is probably down there. If you are built on a slab, then it is probably under a sink, in a corner, or wherever the water comes in you will find your meter. It will be one of the two meters shown below.

Next, we need to open the top of the meter. It’s just a little plastic flap that protects the display. It is probably a little stiff, but I see those muscles, you’re jacked, you can do this. Open it up. You should see a little screen with numbers. If there are no numbers, give it a second, some meters, like people, take a second to get moving. Now you will see a lengthy display with a bunch of digits. You are only interested in the digits with the line over them. The others are what I like to call “counting numbers”.



This meter reads “1500” CF

The underlined reading is your reading. If you notice any digits at all moving this means you have water flowing through your pipes. If you have laundry going, are doing dishes, or showering then this is probably accurate. However, if water is off to your knowledge and these numbers are moving, then you probably have a leak somewhere. The first place I would check in this situation is the toilet. You would be surprised how much water can run through a toilet without knowing it.

Your most recent bill will have your most recent reading. Meters read in 100 Cubic Feet. Compare your reading to see how many CF you have used. Minimum is 1200 CF for your typical $\frac{5}{8}$ ” residential meter. For additional assistance please contact the Utility District (207) 668-7686

Positive Possum believes you can do the thing

